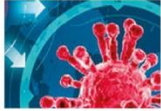




**STORE CATTLE 11am
MONDAY 30TH March 2020**

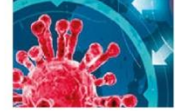
410 Strs & Hfrs, 20 Young Bulls

Staff are on hand to assist with unloading from 7am in the Cattle section.
Please get your cattle here in good time.



Bakewell Market

Monday 30th March



We intend to make every effort to keep the market running at Bakewell Markets play a vital role in the food supply chain, ensuring that the right stock goes to the most appropriate abattoir and that there is an orderly re-supply of store cattle to the finishers.

At this time of National Emergency we are operating under extremely tight Defra LAA

instructions. These change by the day, but the latest rules are set out below.

Please keep consulting our website and Facebook page for updates.

The rules for Monday 30th March are expected to be as follows:-

There are several big changes from before so please read carefully and if in doubt speak to us!

The main change is that Vendors (sellers) are NOT permitted to enter the market.

We **can** accept Prime stock, Cull animals and Store Stock & Calves
As a change from last week we are NOT permitted to sell breeding Cattle, cows with calves at foot or breeding sheep including ewes with lambs at foot.

PLEASE DO NOT BRING ANY

Do not come to market if you suspect that you may have been exposed to infection, are feeling unwell or if you fall into any of the vulnerable categories. Please stay at home.

Vendors

There is a “Drop & Go” System

- Animals must be delivered to the unloading docks (vendors must remain in their vehicles) whilst market staff unload the stock and collect the paperwork
- All paper work must be fully filled in, TB Test Dates, Any Reserves clearly stated etc Market Declarations can be printed off from our website
- Vendors should then leave the market premises immediately. Payments by BACs will be paid in the usual manner, alternatively Cheques will be posted to you. You will not be able to collect these from the market office.

Buyers

Important notice for store cattle buyers

If you wish to buy store cattle on Monday 30th March you must speak to Alastair Sneddon on 07973 982441 to register BEFORE you come to market.

- On Arrival

You will be asked to sign in, giving details of name, address and contact numbers and sign a declaration to state that you have not been in contact with a positive Covid-19 case nor have visited a high risk area during the previous 14 days

- Sale ring

The Sale ring area has been marked out to ensure social distancing of at least 2 metres apart.

It is vital, for everyone's safety that these rules are observed to the letter. Please follow the handwashing code.

Thank you

Young Bulls

D & LA Critchlow, Sheen, F/A	5 Lim, 11-12 Mths
DA Bailey & Son, Sutton Hill	4 ¾ Lim, 12-15 Mths
A Riddle, Ecclesfield, F/A	2 Lim, 10-12 Mths, 4 Year TB
I Cooper, Edale, F/A	9 Lim & Here, 14-18 Mths

Store Cattle

PEN	LOT NUMBER	VENDOR	
1	751-756	CJ Stone, Buxton	6 Blond x Sim Hfrs, 8 Mths
1	757-761	B Chadwick, Onecote,	5 Lim Strs & Hfrs, 8-10 Mths Fully Weaned
3	762	JA Nicholls, Wetley Rocks, F/A	1 Sim Hfr, 8 Mths High Health, BVD Tag & Tested
3	763-766	Mrs K Goldstraw, Wetley Rocks, F/A	4 Lim Hfrs, 8-9 Mths High Health, BVD Tag & Tested
3	767-773	R Greenwood, Barton Under Needwood	7 Lim Strs, 9-12 Mths
4	774-783	FE Whittaker, Bosley, F/A	10 Lim Hfrs, 10 Mths
5	784-787	T Lee, Ripley	2 Char Strs 1 Lim Str 1 Here Sr, 6-12 Mths
5	788-791	DE Witham, Wessington	4 Lim Hfrs, 11-12 Mths
5	792-795	M & G Clowes, Kingsley, F/A	4 Lim Hfrs, 8-9 Mths
6	796-801	TJ & MR Gould, Sheen, F/A	6 Blond Strs, 10-12 Mths
6	802-807	EA Cooper & Sons, Taddington, F/A	6 Sim Strs & Hfrs, 10-12 Mths
7-8	808-823	J Witham, Ashbourne, F/A	4 B Blue Strs 4 Lim Strs 4 B Blue Hfrs 4 Lim Strs, 12 Mths
8	824-827	B Higginson, Swythamley	4 Lim Strs, 11Mths
9-10	828-845	S Young, Radbourne	1 A Angus Hfr 4 A Angus Strs 1 Here Hfr 3 Here Strs All Named Sires 4 B Blue Hfrs 4 B Blue Strs 1 Lim Hfr, 11-13 Mths
10	846-852	J Melland & Son, Pomeroy, F/A	5 Br Fries Strs, 12-14 Mths 1 Flechv Str, 13 Mths 1 Blond Str, 12 Mths
12	853-862	A Elliott, Sitwell Grange	10 Lim Strs & Hfrs, 13-15 Mths Home Bred Out Of Beef Cows
12	863-864	D & LA Critchlow, Sheen, F/A	1 Lim Str, 15 Mths 1 S Horn Str, 10 Mths
13-14	865-884	KA & KW Rushby, Newark	14 A Angus Strs, 16 Mths 6 Assorted Strs 16 Mths
14	885-886	L Keeton, Darley Dale	2 A Angus & Here Hfrs, N Sires
15-16	887-908	G Williamson, Longnor	22 A Angus Str & Hfrs, 12-18 Mths, N Sires
17	909-916	B Myers, Calwich	8 Here Hfrs, 10-14 Mths, N Sires
17	917-920	Greendales, Alderwasley, F/A	4 B Blue Strs, 16-18 Mths
18	921-930	J Adams & Son, Aldridge	6 A Angus Hfrs, 12-13 Mths 2 A Angus Strs, 12-13 Mths 2 A Angus Hfrs, 24 Mths All N Sires
19	931-934	P Furness, Monyash, F/A	2 B Fries Strs, 16-18 Mths 2 Mont Strs, 16-18 Mths
19	935-942	MJ Pilkington, Kniveton, F/A	3 Here Strs, 17 Mths, N Sire 4 Char Strs, 15-17 1 Char Hfr, 27 Mths
20-21	943-960	P Ward, Kirk Ireton	18 Cont, Angus & Here 18-22 Mths
21	961-965	S Tudor, Kingsley	4 B Blue Strs, 18-20 Strs 1 Here Str, 18 Mths
22	966-976	FH Sargeant & Son, Etwall, F/A	5 Lim Strs, 13-19 Mths 5 Lim Hfrs, 17-23 Mths 1 Lim Str 22 Mths

			Home Bred Out Of Beef Cows
23	977-982	A Bennison, Compstall	2 Sim Hfrs, 17 Mths 2 Here Strs, 24 Mths 2 Here Hfrs, 24 Mths, N Sire
23	983-987	JW Oakes, Wirksworth	3 Norweigan Red Strs 1 H Fries Str 1 Sim Str, 18 Mths
24-25	988-1005	E Cowan, Belper	1 A Angus Str, 14 Mths 6 A Angus Hfrs, 17-19 Mths 8 A Angus Strs, 19-22 Mths All Named Sires 2 B Blue Strs, 14 Mths 1 B Blue Hfr, 14 Mths
25	1006-1008	CS Edge & Partners, Alsop Moor	2 B Blue Strs, 18 Mths 1 Here Hfr, 20 Mths, N Sire
26-27	1009-1027	DA Bailey & Son, Sutton On The Hill	8 ¾ Lim Hfrs, 10-12 Mths 7 ¾ Lim Hfrs, 16-20 Mths 4 ¾ Lim Hfrs, 22-26 Mths
27	1028-1032	R Bennett & Son, Bamford	5 A Angus Strs & Hfrs, 16-18 Mths Named Sires
28	1033-1039	R Tatlow, Ashbourne Green	7 Cont Strs, 15-18 Mths
28	1040-1043	D Poole & Son, Flagg, F/A	4 B Blue Hfrs, 17-19 Mths
29	1044-1047	AG Sheldon, Rugeley	4 A Angus & Here Strs, 18 Mths
29	1048-1049	LA Scott & Curley, Hulland	1 B Blue Str, 20 Mths 1 A Angus Hfr, 20 Mths
29	1050-1054	JW Oakes, Wirksworth	3 Nor Red Strs 1 Hol Fries Str 1 Sim Str, 18 Mths
30	1055-1058	PG Godber, Kimberley	2 Here Strs, 14 Mths 1 A Angus Str, 24 Mths 1 Lim Str, 16 Mths
30	1059-1064	M Burnett, Rowsley, F/A	3 Lim Strs 1 B Blue Str 2 B Blue Hfrs, 19-20 Mths
31-33	1065-1101	J & P Riley, Pilsbury, F/A	30 Lim x Strs, 22 Mths 7 Lim x Hfrs, 22 Mths
33	1102-1104	JG & R Spencer, Winster	1 A Angus Str 2 A Angus Hfr, 21-22 Mths Named Sires
34-35	1105-1124	R & P Ratcliffe, Sudbury, F/A	20 Lim x Strs, 24 Mths
36	1125-1127	GW Smith, Aldwark	3 B Blue Strs, 21 Mths
36	1128-1132	Miss J Mosley, Shirland	4 Beef Shorthorn Strs, 24 Mths 1 Beef Shorthorn Hfr, Non Breeder, 24 Mths
37	1133-1138	N Naylor, Crowdicote	6 Lim Hfr, 25-26 Mths
37	1139	GG & OM Carthy, Barton	1 Lim Hfr, 23 Mths
37	1140-1143	WI Fletcher & Son, Sheldon, F/A	2 Lim Hfrs 1 Lim Str 1 Sim Hfr, 29 Mths
38	1144-1151	W Whitbread, Biggin	3 Here Hfrs 3 B Blue Hfrs 1 A Angus Hfr 1 Lim Hfr, 23-24 Mths
38	1151-1153	RP Lawley, Draycott, F/A	1 Lim Hfr 1 Lim Str 1 Here Hfr, N Sire, 18 Mths
39	1154-1156	O Brayne, Derwent	1 Lim Hfr, 25 Mths 2 A Angus Hfrs, 23 Mths Out of Beef Cows
39	1157-1160	M Ludlam, Ludlam Farms	4 Lim Hfrs, 14-16 Mths